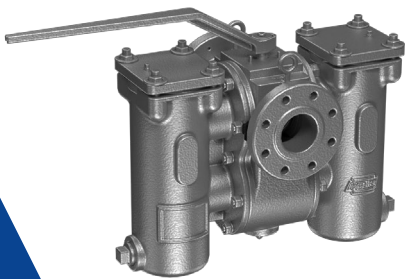


Simplify Maintenance with Smart Strainers

Ideal for Industrial HVAC & Process Cooling Systems

Smart Strainers free your team to focus on other critical tasks!



Smart Duplex Strainers

- Monitor differential pressure
- Receive real-time alerts
- Enable planned maintenance



Smart Wye Strainers

- Monitor differential pressure
- Automatically flush basket
- Reduce maintenance labor and time

An add-on Connection Kit is required to activate the sensor monitoring and receive notifications via a wired connection to your BAS/BMS or a Wi-Fi connection to Nexa, a water management platform from Watts.

works with **nexa**



Scan to Watch Video

Watts.com/smartstrainer

Mueller Steam Specialty™

A **WATTS** Brand

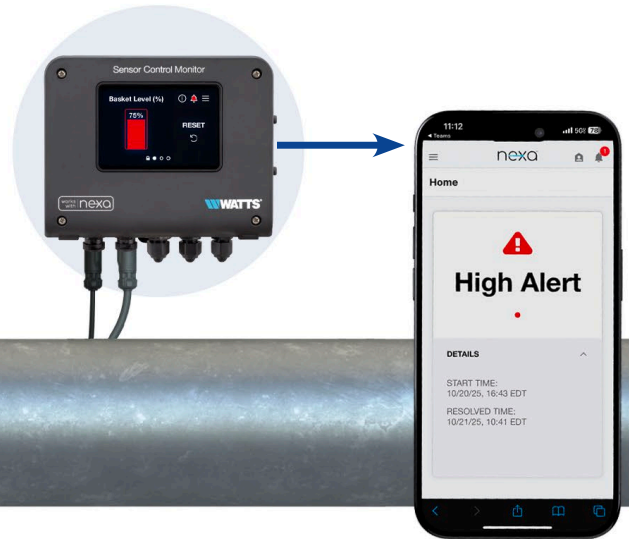
Optimize Efficiency & Reliability with Auto Flush Wye Strainers

How It Works

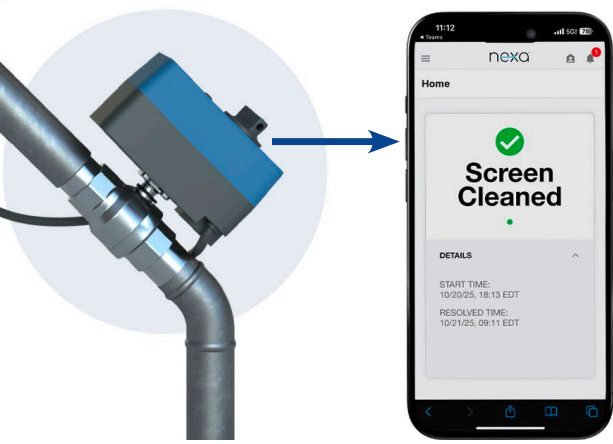
1 Pressure sensors are pre-installed on the inlet and outlet of the strainer.

2 Installation and configuration of an add-on Connection Kit enables pressure and basket fill level data to be collected and transmitted in real-time to your connection platform.

3 When the differential pressure across the strainer screen exceeds the pre-configured threshold, the motorized ball valve automatically opens to flush the basket into a pre-piped drain.



An alert is sent when the basket is full and when it will be flushed.



Notification is sent when the basket has been automatically flushed!



Scan to watch video. Find your connection kit.
Watts.com/smartstrainer



USA: Tel: (800) 334-6259 • MuellerSteam.com
Latin America: Tel: (52) 55-4122-0138 • MuellerSteam.com

A WATTS Brand

PF-MS-Smart Strainer 2605

© 2026 Watts